

Trigger Vale

meat the market



2003 Newsletter

**Meat the future
using
Bond & White Suffolk
Genetics**

Andrew Bouffler – ph/fax 02 69207656
email bouf@dragnet.com.au

Philip Bouffler – ph/fax 02 69205372
email gurnayvl@dragnet.com.au

Jim Bouffler – ph 02 69212135

<http://www.bondsheep.org.au/triggervale>

Trigger Vale on-property auction September 5th, 2003

Welcome

Welcome to the Trigger Vale 2003 newsletter, which we hope to become a yearly method of informing clients of our White Suffolk & Bond Stud news along with relevant industry information. We hope that wherever you are reading this your season has broken and things are on the improve. With clients spread over a large area of Southern Australia I don't know of anyone who has missed the drought over the past 18 months. Looking to the positives farmers who run sheep like ourselves, as part of their total business have enjoyed much needed cashflow with lambs, mutton, surplus store sales & wool (particularly last spring) all selling at near record levels. The big issue hanging over the industry is the shortage of breeding ewes as the national flock recovers. With clients currently joining Trigger Vale Bond rams to Bonds, Merino and firstX ewes this problem is solved as they are breeding their own replacements. For producers hoping to source ewes from tradition store sales it might be time to consider this option for a percentage of your current flock.

Weather aside the past year has been incredibly challenging at Trigger Vale as we constantly strive to increase the rate of genetic progress in our White Suffolk and Bond studs. Lambplan performance testing has clearly become the number one tool available to us to measure and improve the profitability of our rams for our clients. In recent years we have found some clearly superior genetics in our Bond flock and the progress although slower than we would like is starting to flow. With the White Suffolk genetic pool being so large the gain can be more rapid by sourcing high performing stud rams. Over the last

2 years we have purchased 2 very exciting Stud sires from Depta Grove (Victoria) & Allendale (SA). (Refer pages 4 & 5 for sire details).

Other recent highlights include a semen export of our No 1 ranked Bond Stud Ram (OOL024) to the Falkland Islands. This sire has outstanding progeny available this spring. We have also been part of a very successful local lamb marketing campaign with the Lockhart IGA supermarket (refer page 8).

We are plan on having our sale catalogues available for viewing a fortnight prior to sale on our web page (<http://www.bondsheep.org.au/Triggervale/default.htm>) or available by fax or post on request.

Its with great pleasure that we announce the milestone of long term Trigger Vale and Bond breed classer Jim Daley 100th Birthday this year. Jim Daley's contribution to the development of the Bond breed and his life time dedication to the Australian sheep industry can't be overstated and we look forward to seeing him once again at our sale still advising clients on ram selection.

In closing we hope that you find this newsletter informing as we feel it will become the best means of sharing Trigger Vale & industry news. Please don't hesitate to contact Andrew, Philip or Jim about any questions or concerns you have regarding your sheep enterprise. We are in the business of maximising your sheep enterprise returns.

Lambplan performance testing has clearly become the number one tool available to us to measure and improve the profitability of our rams for our clients.



Andrew Bouffler – ph/fax 02 69207656
email bouf@dragnet.com.au

Philip Bouffler – ph/fax 02 69205372
email gurnayvl@dragnet.com.au

Jim Bouffler – ph 02 69212135

<http://www.bondsheep.org.au/triggervale>

Trigger Vale on-property auction September 5th, 2003

Why use maternal tested LAMBPLAN Bond sires?

LAMBPLAN is Australia's national sheep industry genetic improvement program that has been operating in the lamb industry since 1990.

During this time participating maternal sire breeders have made significant improvement in the quality of genetics made available to the industry. Commercially important characteristics, such as maternal ability, growth, carcass and fleece traits, are being measured for evaluation by LAMBPLAN.

The information provided on all LAMBPLAN evaluated sheep comes in the form of Estimated Breeding Values (EBV's). LAMBPLAN EBV's rate animals' genetic merit for a number of traits that are important for selecting maternal sires that breed superior prime lamb dams. EBV's

are calculated free of non-genetic effects, such as nutrition and management. LAMBPLAN EBV's are calculated across flock, thereby benchmarking all evaluated animals. This enables both seedstock and commercial breeders to identify the best genetics available across the breed, not just within an individual flock, to maximise genetic progress towards breeding and marketing objectives.

LAMBPLAN EBV's are the best description of animals' genetic merit for a range of maternal, growth, carcass and wool traits. EBV's are an

excellent tool for identifying genetically superior animals to maximise genetic improvement in your flock. By understanding the indexes available, you can utilise the one with the appropriate trait weightings to match your breeding objectives.

Lambplan EBV's are calculated across flock, thereby benchmarking all evaluated animals

Why use terminal tested LAMBPLAN White Suffolk sires?

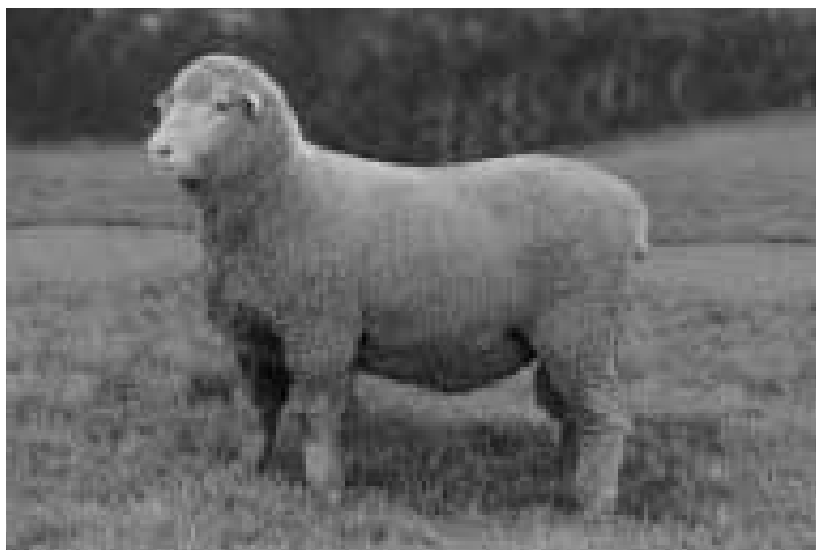
The skill in selecting terminal sires for lamb production lies in identifying sires that produce lambs with a high growth rate, low fat (lean) and better carcass muscling. LAMBPLAN provides an estimate of the value of a sire's genes by looking at his own performance and that of his relatives. This estimate is called an Estimated Breeding Value (EBV).

The skill in selecting terminal sires for lamb production lies in identifying sires that produce lambs with a high growth rate, low fat (lean) and better carcass muscling. LAMBPLAN provides an estimate of the value of a sire's genes by looking at his own performance and that of his relatives. This estimate is called an Estimated Breeding Value (EBV).

Terminal Sires have 3 important traits

1. Yearling weight (YWT) – Describes an animal's genetic merit for growth rate. A positive EBV means the animal's progeny have the genetic ability to grow faster than average. In other words, they reach market weight at an earlier age.
2. Yearling fat (YFAT) – Describes the value of an animal's genes for fat depth at a constant weight. A negative EBV means that an animal's progeny will be leaner.
3. Yearling eye muscle depth (YEMD) – Describes the value of an animal's genes for eye muscle depth at a constant weight. A positive EBV means a thickly muscled animal that will have slightly more of its lean tissue in higher-priced cuts.

Bond Sire Battery



00L024

Currently our No.1 stud sire.

00L024							INDEX
PWT	YWT	YFAT	YEMD	YFD	YGFW	NLW	80:10:10
3.68	3.58	-0.29	0.23	-0.86	0.18	0.043	122.48
Micron: HGT 24.3 ADULT 25.4 Comments: Currently our No.1 stud sire. Sired by the biggest ram we have ever bred. First progeny for sale 2003 and look outstanding. Structurally very sound and heavy wool cutter. Semen sold to Falkland Islands 2003.							

990133							INDEX
PWT	YWT	YFAT	YEMD	YFD	YGFW	NLW	80:10:10
1.07	2.14	-0.71	1.02	0.01	0.11	0.032	125.44
Micron: HGT 23.07 ADULT 24 Comments: Sired by No.1 ranked ram for the bond breed in Lambplan. Has constantly produced top progeny with 4 sons being used in our ram breeder groups. Very high muscle reflected in his square hind quarters. Has a great top line.							

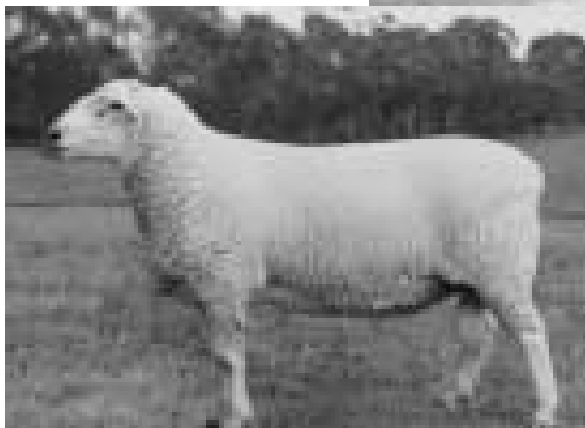
00Y167							INDEX
PWT	YWT	YFAT	YEMD	YFD	YGFW	NLW	80:10:10
3.36	3.18	0.44	-0.42	0.01	0.15	0.018	110.12
Micron: HGT 23.4 ADULT 24.5 Comments: Beautiful dual-purpose ram which has very good growth estimated breeding value. An eye-catcher with great depth of barrel and hindquarters. Has a very soft high yielding wool. First progeny for sale 2003.							

01N039							INDEX
PWT	YWT	YFAT	YEMD	YFD	YGFW	NLW	80:10:10
2.47	2.93	-0.71	-0.24	-0.37	0.40	0.016	115.54
Micron: HGT 23.8 ADULT 25.4 Comments: Very heavy wool cutter shown by 126% GFW result. Dam Trigger Vale No.1 ranked ewe and also No.1 for Bond breed in Lambplan elites. Beautiful soft handling wool on a large frame. If breeds true to type expecting big things.							

White Suffolk Sire Battery

Allendale 115 (Son of Phantom)

This ram is a perfect example of what the White Suffolk breed has to offer.



Depta Grove 000205

We were looking for a ram to inject growth and muscle into our stud and he hasn't let us down.

DEPT A GROVE 000205

BWT	WWT	PWWT	YWT	PFAT	PEMD	Carcase Plus
-0.14	4.61	8.38	6.83	-0.22	1.21	166.54

Comments: Purchased from Dept A Grove (Vic) in 2001 for \$3250. We were looking for a ram to inject growth and muscle into our stud and he hasn't let us down. First progeny available 2003 sale and looking exceptional. His Lambplan figures are very balanced.

ALLENDALE 115 (Son of Phantom)

BWT	WWT	PWWT	YWT	PFAT	PEMD	Carcase Plus
0.01	4.38	6.9	6.08	-0.09	0.69	148

Comments: Purchased for \$2500 from Allendale (SA) in 2002. Bred by "The Phantom" which was purchased by Allendale as a ram lamb for \$5000. This ram is a perfect example of what the White Suffolk breed has to offer with clean points and an exceptional frame. Progeny showing same traits.

ALLENDALE 990284

BWT	WWT	PWWT	YWT	PFAT	PEMD	Carcase Plus
0.21	2.47	4.4	3.05	-0.47	-0.25	132

Comments: The physical length of this ram makes his progeny ideally suited for targeting the sucker and trade markets over Bond or Merino ewes. Many daughters retained in our stud and their size makes them perfect for joining with the above stud sires

Trigger Vale and Lockhart IGA combine to market Bond Lamb

In 2003 Bob Matthews from Lockhart IGA supermarket approached us with the idea of a locally produced Bond lamb marketing campaign. To date we have sent several consignments of lamb and the concept has been very warmly received. The real value to Trigger Vale has been the feedback we have received from the butchers and their customers. It is becoming increasingly important to understand that we are involved in the food industry and decisions should be made accordingly. This has been the reason for our accreditation with the "Flockcare" quality assurance program. We have to listen to what our customers require not give them what we think they should have. We were most encouraged by what Bob Matthews and his customers had to say.

"As an independent, locally owned supermarket, Lockhart IGA strive for a community focus and whenever feasible we like to buy our products and services locally. For this reason we decided to purchase Bond Lamb from Trigger Vale, a local premium producer.

We asked both our customers and butchers to compare the local lamb to our previous products and the feedback was extremely positive.

Customers were very satisfied - they claimed the lamb is lean, full of flavour and tender - everything a customer demands.

Our butchers were also more than pleased. They found the lamb to be a good size, consistent in quality and was very presentable in texture and colour.

The results have been greatly successful. If you would like to discuss the quality of lamb in any further detail, please do not hesitate to contact me on the number below."

Kind regards

Bob Matthews, Lockhart IGA - Supermarket Proprietor
Ph. 02 6920 5543 Fx. 02 6920 5277



left to right:
Bill Hamson,
Andrew Bouffler, Philip Bouffler and Bob Matthews

SHEEP SET TO OUTDO CROPPING

Article by David Sackett, Weekly Times

Sheep are set to return greater profits than winter crops, according to a survey recently released by farm management consultancy Holmes Sackett and Associates.

The survey, commissioned jointly by Meat and Livestock Australia and Australian Wool Innovation, is an integral part of the push to rebuild the nation's flock.

It also supports MLA's Prime Time promotion for producing an extra one million prime lambs in 2004.

The survey, based on an analysis of 200 enterprises in south-eastern Australia, estimated that the top 20% of prime lamb and wool-lamb enterprises would have gross margin returns of \$466 and \$480 a hectare respectively for 2003-2004.

This compared with projected gross margins for the top 20% of wheat and canola farms of \$392 and \$354 respectively.

HSA co-principal David Sackett said the projections were based on April 2003 spot prices, including 1037c/kg clean for wool, \$2/kg for mutton, and \$3.90/kg dressed for prime lamb.

However, for wheat and canola, the survey used forward delivery prices being offered in April. These included an on-farm rate of \$180/tonne for wheat and \$370/tonne for canola.

A forward delivery rate of \$180 for wheat was well below the April cash price of \$220 plus.

Yields, cuts per head and lamb turnoffs were based on a five-year average per hectare from the 200 survey farms.

Mr Sackett was unable to explain why the survey chose not to use forward delivery prices for wool or lambs.

Since April, the wool prices have eased. This week's Eastern Market Indicator was 949c/kg clean, with forward delivery prices for the next 12 months holding at about 950 cents for 21 micron wool.

Prime lamb prices have also firmed since April.

But despite the differing farm-gate prices, Mr Sackett said the profitability for both prime lamb and wool-lamb enterprises had improved considerably during the past five years.

Other findings from the Holmes Sackett report included:

- The cost of building sheep numbers is lower than establishing a wheat or canola crop or rebuilding a beef herd
- The key driver of lamb profitability is kilograms of lamb produced per hectare

Sheep Health Issues

What has become a major concern in the sheep industry of late is the continuing enforcement of the ridiculous OJD program. This program is clearly not halting the spread of the Johnes and is impacting a financial and emotional stress on hard working sheep producers at much higher levels than the actual disease. We became part of the beauracratic mess on the 31st October last year when NSW Department of Agriculture rezoning put a line on a map past our front gate along the Lockhart/ Urana road. This left us with country on both sides of the line and 10 months later we still aren't 100% clear on what it all means. What we do know is what Trigger Vales OJD policy and views are:

- 1) Obviously we don't want OJD just like we don't want footrot, lice or worm resistance. Our policies of having a closed flock, trucking stock between farms, and killing any stock that wanders means we are very low risk of introducing any of the before mentioned diseases.
- 2) Trigger Vale hasn't tested for OJD. This has been a conscious decision, as we believe it would be irresponsible for us to test given the huge downside to ourselves and our clients of a positive result, (as unlikely as it would be) under the current program.
- 3) We do closely monitor the likely status of our flock by all other means available. The large number of Trigger Vale blood CFA ewes going through abattoir surveillance with negative ojd results is the best test you can have which gives us an assurance we don't have Johnes. We have also had some clients who have been forced to test due to the program (ie. they had neighbors positive) with the feedback being their rams and flocks are clear of OJD .
- 4) All of the 2003 sale Bond and White Suffolk rams have been vaccinated with the Gudair vaccine. This was done as a final insurance program for our clients. Regardless of all other factors the best way to ensure stock will never have Johnes is to vaccinate.
- 5) We have been very involved in the industry driven push to de-regulate the current program and remove the burdens it imposes on producers. With many industry reviews



currently taking place I am sure common sense will finally prevail and an individual farm risk based trading program will emerge along with the vaccine being made available to all producers. Richard Bulls independent report to the NSW Agriculture Minister is due by early August. The time frame for any change remains unsure but we are hopeful that the current zoning system will be removed by late Sept/Oct.

What does all this mean for the 2003 Trigger Vale ram sales?

Answer: BUSINESS AS USUAL with the Auction Sale being held on 5th Sept and private sales afterwards.

After talking to many clients the feedback was clear. They wanted to stay with the Trigger Vale bloodline and have an equal opportunity to purchase the best of the drop at auction. Rams purchased on sale day by clients currently in the protected zone can remain at Trigger Vale until the current reviews are finalised. Be sure to contact Andrew, Philip or Jim if you have any more queries regarding any of these issues.

Trigger Vale

meat the market

Invites old and new clients to our

26TH ANNUAL BOND & WHITE SUFFOLK RAM SALE

70 SPECIALLY SELECTED BOND RAMS
40 SPECIALLY SELECTED WHITE SUFFOLK RAMS

**AT "TRIGGER VALE" LOCKHART
ON FRIDAY 5TH SEPTEMBER, 2003
INSPECTION 10.00AM ONWARDS
SALE COMMENCING AT 1.30PM**

- ★ All Bonds fleece and body weighed and micron measured ★
- ★ Portion pedigreed and Lambplan tested ★
- ★ All White Suffolks pedigreed and Lambplan tested ★
- ★ Accredited Brucellosis Free ★
- ★ Flockcare Accredited ★

Vendors: Andrew Bouffler (02) 6920 7656
Philip Bouffler (02) 6920 5372
Jim Bouffler (02) 6921 2135

Stud Classer: Ian Marwedel (02) 6882 7830
<http://www.bondsheep.org.au/Trigger/default.htm>

Selling Agent: Harper Trevaskis Pty Ltd, Lockhart - AH 02 6920 5262
In conjunction with Elders Ltd Wagga

Rebate of 1½% will be allowed by the vendor to any outside agent introducing buyers
in writing prior to the sale and settling within 7 days from the date of invoice.

LUNCHEON AVAILABLE

Proudly supported by Rabobank



Rabobank